

## Overview

Cisco catalyst 2960X-24TS-L LAN Base Layer 2 stackable switch provides enterprise-class access for campus and branch applications..

### Quick Specs

Figure 1 shows the front view of the Cisco 2960X-24TS-L switch.

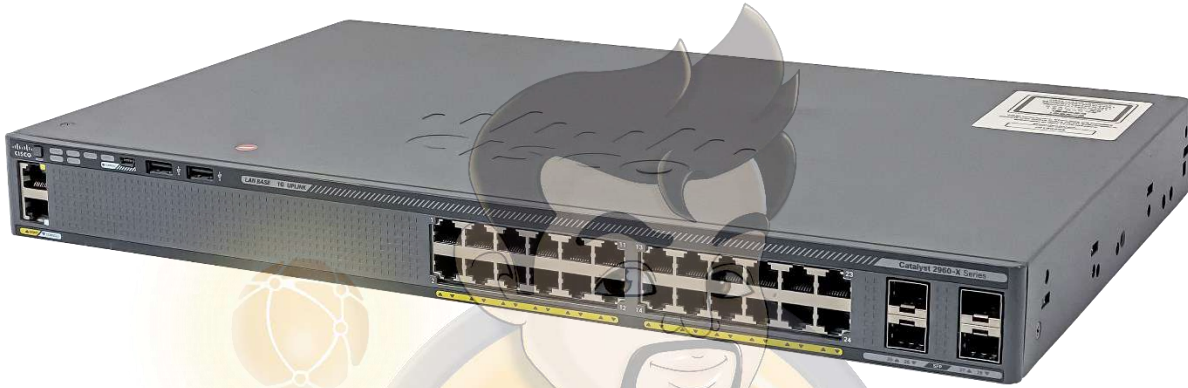


Table 1 shows the Quick Spec of the Cisco 2960X-24TS-L switch.

Product Code	WS-C2960X-24TS-L
Enclosure Type	Rack-mountable - 1U
Feature Set	LAN Base
Uplink Interfaces	4 x 1G SFP
Ports	24 x Ethernet 10/100/1000 Gigabit ports
Maximum stacking number	8
Stack bandwidth	80G
Forwarding Performance	71.4 Mpps
Switching Bandwidth	216Gbps
RAM	512 MB
Flash Memory	128 MB
Dimensions	1.75 x 11.0 x 17.5 in
Package Weight	4 Kg

Product Details

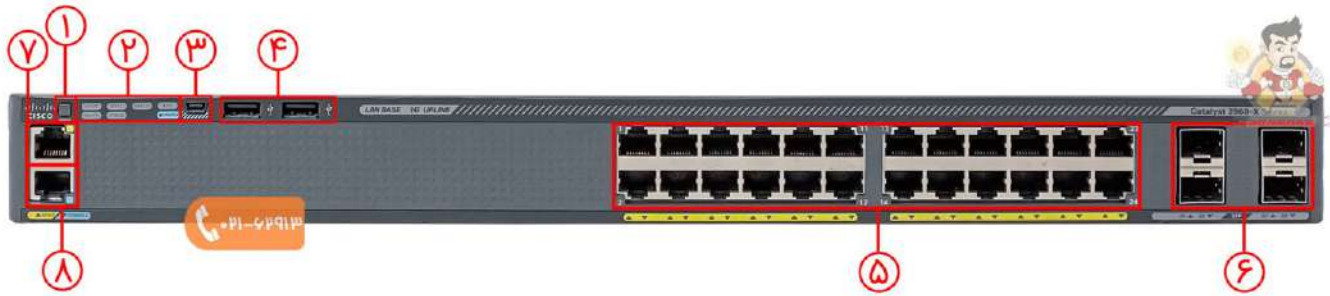


Figure 2 shows the front panel of the Cisco 2960X-24TS-L switch.

(1)	Mode button	(5)	24 x 10/100/1000 ports
(2)	Switch LEDs	(6)	SFP+ module ports
(3)	USB mini-Type B	(7)	Ethernet management port
(4)	USB Type A ports	(8)	RJ-45 console port

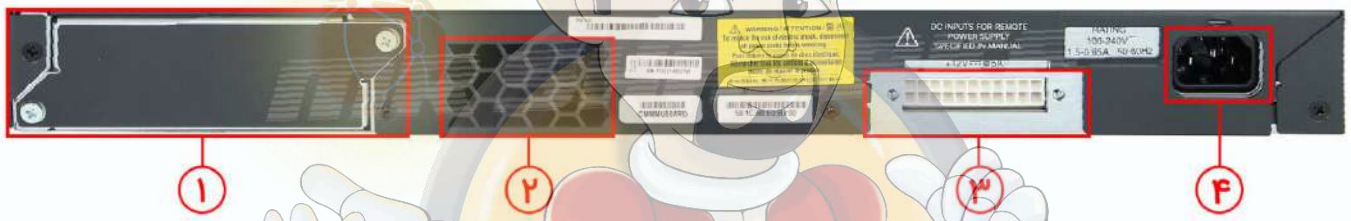


Figure 3 shows the back panel of the Cisco 2960X-24TS-L switch.

(1)	FlexStack-Plus module slot and cover	(3)	RPS Connector
(2)	Fan Exhaust	(4)	AC power connector

stackable capacity.

This C2960X switch delivers stackable capacity that supports up to 8 switches stacking with same 2960-X LAN base series. It also can stack up to 4 switches stacking when mixed with 2960-S LAN base series switches.



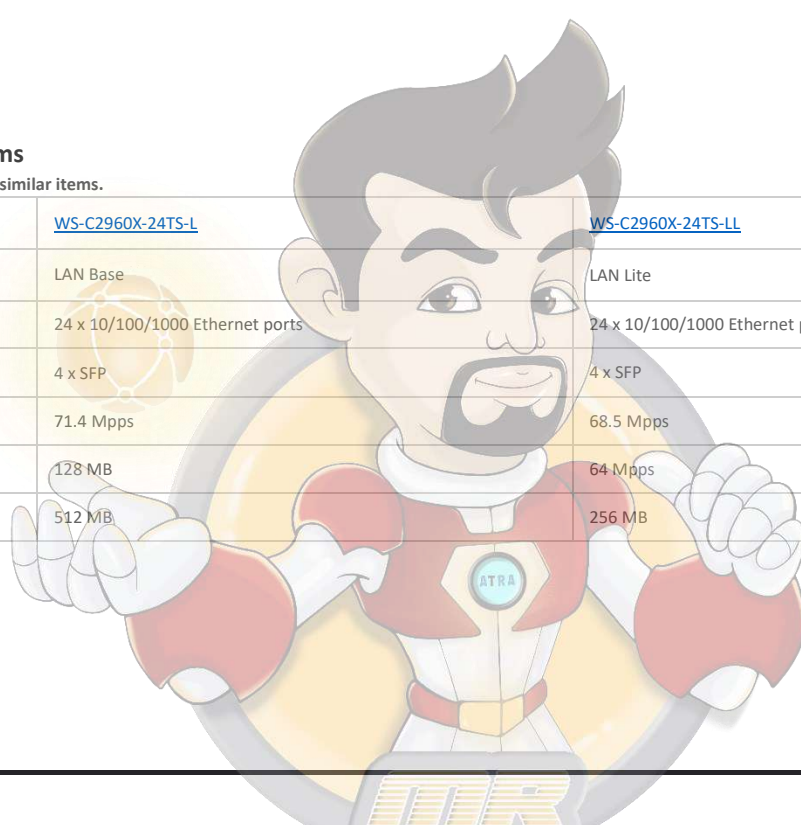
Table 1 shows the Quick Spec of the Cisco 2960X-24TS-L switch.

Models	Description
C2960X-STACK	Catalyst 2960-X FlexStack Plus Stacking Module
CAB-STK-E-0.5M	Cisco FlexStack Stacking Cables
GLC-LH-SMD	Cisco GLC-LH-SMD 1000BASE-LX/LH SFP transceiver module, MMF/SMF, 1310nm, DOM
GLC-SX-MMD	1000BASE-SX SFP transceiver module, MMF, 850nm, DOM
CAB-CONSOLE-RJ45	Console Cable 6ft with RJ45 and DB9F
CAB-CONSOLE-USB	Console Cable 6 ft with USB Type A and mini-B

### Compare to Similar Items

Table 3 shows the comparison of similar items.

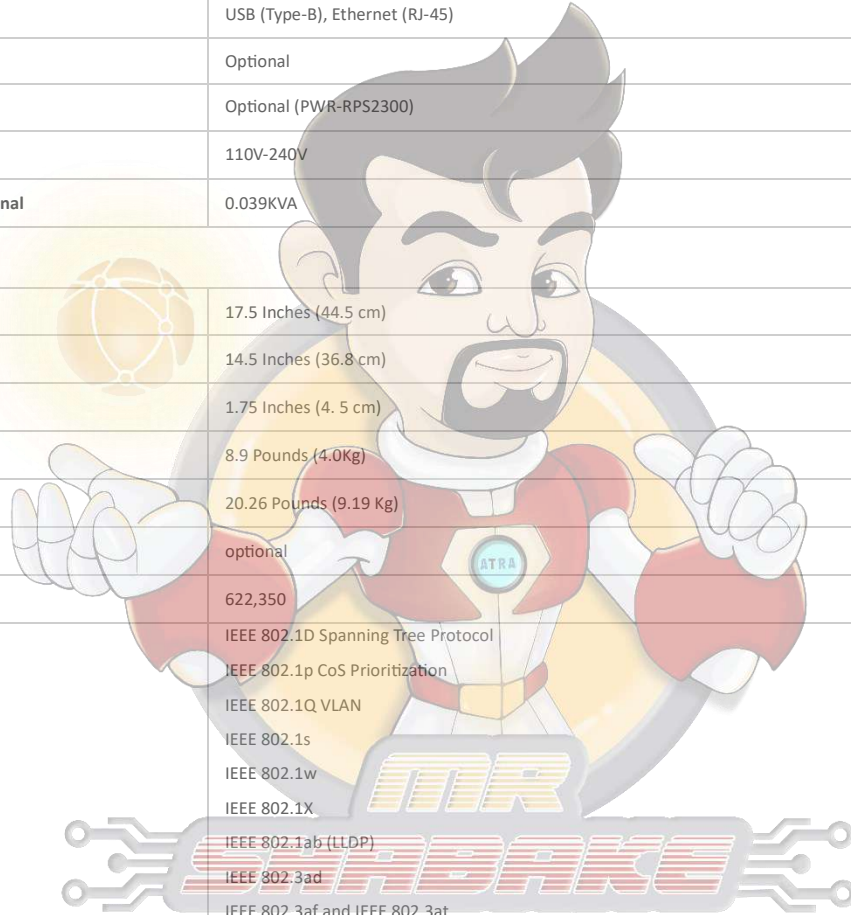
Models	<a href="#">WS-C2960X-24TS-L</a>	<a href="#">WS-C2960X-24TS-LL</a>
Feature Set	LAN Base	LAN Lite
Ports	24 x 10/100/1000 Ethernet ports	24 x 10/100/1000 Ethernet ports
Uplink interfaces	4 x SFP	4 x SFP
Forwarding rate	71.4 Mpps	68.5 Mpps
Flash memory	128 MB	64 Mpps
DRAM	512 MB	256 MB



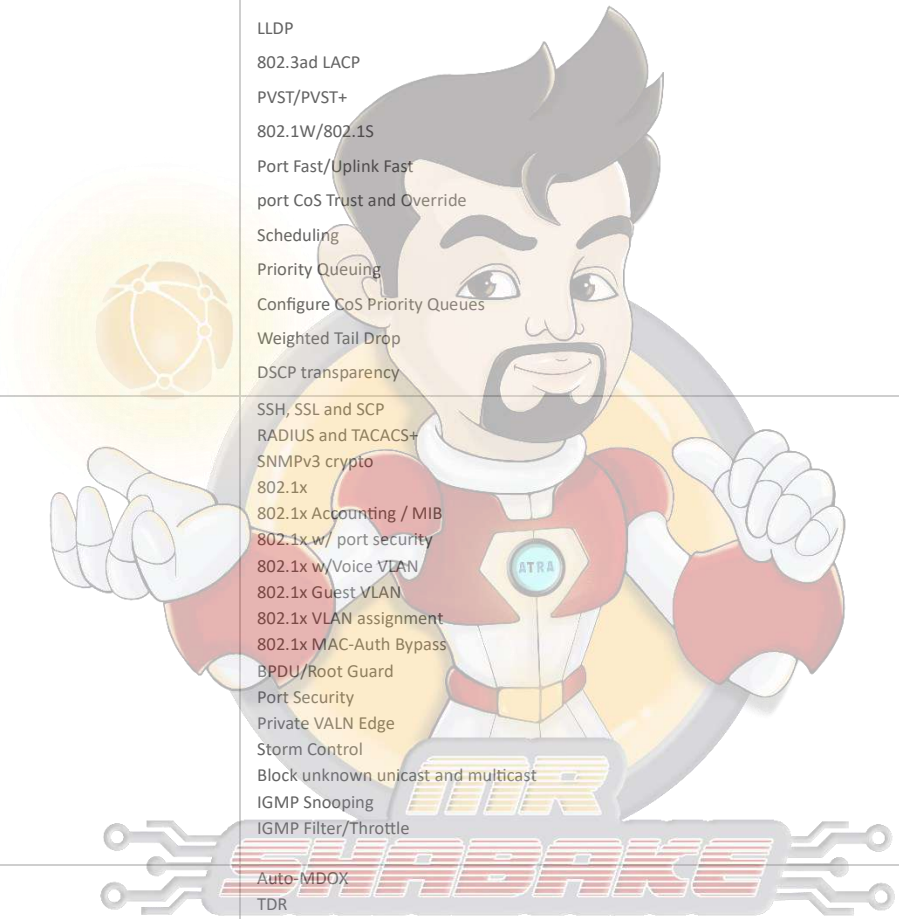
### Specification

WS-C2960X-24TS-L Specification	
enclosure type	Rack-mountable - 1U
Ports	24 x 10/100/1000 + 4 x1G SFP
Network management Interface	10/100 Mbps Ethernet (RJ-45)
Available PoE Power	None
Forwarding bandwidth(Gbps)	108Gbps
Maximum stacking number	8
Stack Bandwidth	80Gbps
Forwarding Performance	71.4Mpps

Switching bandwidth	216Gbps
Maximum active VLANs	1023
MAC Address Table Size	16K (default)
CPU	APM86392 600MHz dual core
RAM	512 MB
Flash Memory	128 MB
<b>Expansion / Connectivity</b>	
Console ports	USB (Type-B), Ethernet (RJ-45)
Stacking cable	Optional
Power Redundancy	Optional (PWR-RPS2300)
Voltage range (Auto)	110V-240V
Power Consumption Operational	0.039KVA
<b>Miscellaneous</b>	
Width	17.5 Inches (44.5 cm)
Depth	14.5 Inches (36.8 cm)
Height	1.75 Inches (4.5 cm)
Weight	8.9 Pounds (4.0Kg)
Package Weight	20.26 Pounds (9.19 Kg)
Rack Mounting Kit	optional
MTBF in hours	622,350
<b>Compliant Standards</b>	IEEE 802.1D Spanning Tree Protocol
	IEEE 802.1p CoS Prioritization
	IEEE 802.1Q VLAN
	IEEE 802.1s
	IEEE 802.1w
	IEEE 802.1X
	IEEE 802.1ab (LLDP)
	IEEE 802.3ad
	IEEE 802.3af and IEEE 802.3at
	IEEE 802.3ah (100BASE-X single/multimode fiber only)
	IEEE 802.3x full duplex on 10BASE-T, 100BASE-TX, and 1000BASE-T ports
	IEEE 802.1D Spanning Tree Protocol
	IEEE 802.1p CoS Prioritization
	IEEE 802.1Q VLAN
	IEEE 802.1s
IEEE 802.1w	
IEEE 802.1X	
IEEE 802.1ab (LLDP)	
IEEE 802.3ad	
IEEE 802.3af and IEEE 802.3at	
IEEE 802.3ah (100BASE-X single/multimode fiber only)	
IEEE 802.3x full duplex on 10BASE-T, 100BASE-TX, and 1000BASE-T ports	



System software / license	
System software	IOS LAN BASE
license	NERGY-MGT-100-K9, EW-DO-100-DE
features	<p>RPS Support</p> <p>Jumbo Frames</p> <p>VLANS</p> <p>Voice Vlan</p> <p>VTPv2</p> <p>CDPv2</p> <p>LLDP</p> <p>802.3ad LACP</p> <p>PVST/PVST+</p> <p>802.1W/802.1S</p> <p>Port Fast/Uplink Fast</p> <p>port CoS Trust and Override</p> <p>Scheduling</p> <p>Priority Queuing</p> <p>Configure CoS Priority Queues</p> <p>Weighted Tail Drop</p> <p>DSCP transparency</p>
Network security	<p>SSH, SSL and SCP</p> <p>RADIUS and TACACS+</p> <p>SNMPv3 crypto</p> <p>802.1x</p> <p>802.1x Accounting / MIB</p> <p>802.1x w/ port security</p> <p>802.1x w/Voice VLAN</p> <p>802.1x Guest VLAN</p> <p>802.1x VLAN assignment</p> <p>802.1x MAC-Auth Bypass</p> <p>BPDU/Root Guard</p> <p>Port Security</p> <p>Private VALN Edge</p> <p>Storm Control</p> <p>Block unknown unicast and multicast</p> <p>IGMP Snooping</p> <p>IGMP Filter/Throttle</p>
Management and Troubleshooting	<p>Auto-MDOX</p> <p>TDR</p> <p>UDLD</p> <p>IP SLA Responder</p> <p>layer 2 / IP Traceroute</p> <p>SPAN</p> <p>RSPAN</p> <p>Express Setup</p> <p>Device Manager</p> <p>Cisco Network Assistant</p> <p>Smartports + Advisor</p> <p>Troubleshooting Advisor</p> <p>Drag-and-drop Cisco IOS Upgrade</p> <p>IP Address DHCP</p> <p>Autoinstall with saved configuration</p> <p>Configuration Replace</p> <p>DHCP Auto Image Upgrade</p> <p>DHCP Port Based Allocation</p> <p>Error Disable MIB</p>



Environmental Ranges	
With AC power supply Operating environment and altitude	
Operating temperature up to 5000 ft (1500 m)	23°F to 113°F (-5°C to +45°C)
Operating temperature up to 10,000 ft (3000 m)	23°F to 104°F (-5°C to +40°C)
Short-term exception at sea level*	23°F to 131°F
Short-term exception up to 5000 feet (1500 m)	23°F to 122°F (-5°C to 50°C)
Short-term exception up to 10,000 feet (3000 m)	23°F to 113°F (-5°C to 45°C)
Short-term exception up to 13,000 feet (4000 m)	23° to 104°F
Storage temperature up to 15,000 feet (4573 m)	-13° to 158°F
Operating altitude	Up to 10,000 Feet
Storage altitude	Up to 13,000 Feet
Operating relative humidity	10% to 95% noncondensing
Storage relative humidity	10% to 95% noncondensing

شما میتوانید کلیه تجهیزات شبکه را با گارانتی و ضمانت اصالت کالا از [فروشگاه اینترنتی مستر شبکه](#) تهیه کنید.

### مقالات مرتبط :

- [کانفیگ سوئیچ سیسکو](#)
- [ریکوری پسورد سوئیچ 3850 و 2960](#)
- [قابلیت SPAN در سوئیچ های سیسکو](#)
- [پروتکل SNMP یا پروتکل مدیریت شبکه چیست؟](#)
- [قابلیت Stack در سوئیچ سیسکو 3850](#)
- [ماژول های سازگار با سوئیچ های 3850](#)
- [راهنمای خرید سوئیچ سیسکو 3850](#)