

Overview

C9200L-24P-4X-E is the Catalyst 9200L 24 ports full PoE+ 4x10G uplink Switch, with Network Essentials software. Cisco® Catalyst® 9200 Series switches extend the power of intent-based networking and Catalyst 9000 hardware and software innovation to a broader set of deployments. With its family pedigree, Catalyst 9200 Series switches offer simplicity without compromise – it is secure, always on, and IT simplified.

Quick Specs

Figure 1 shows the appearance of the Cisco Catalyst C9200L-24P-4X-E.

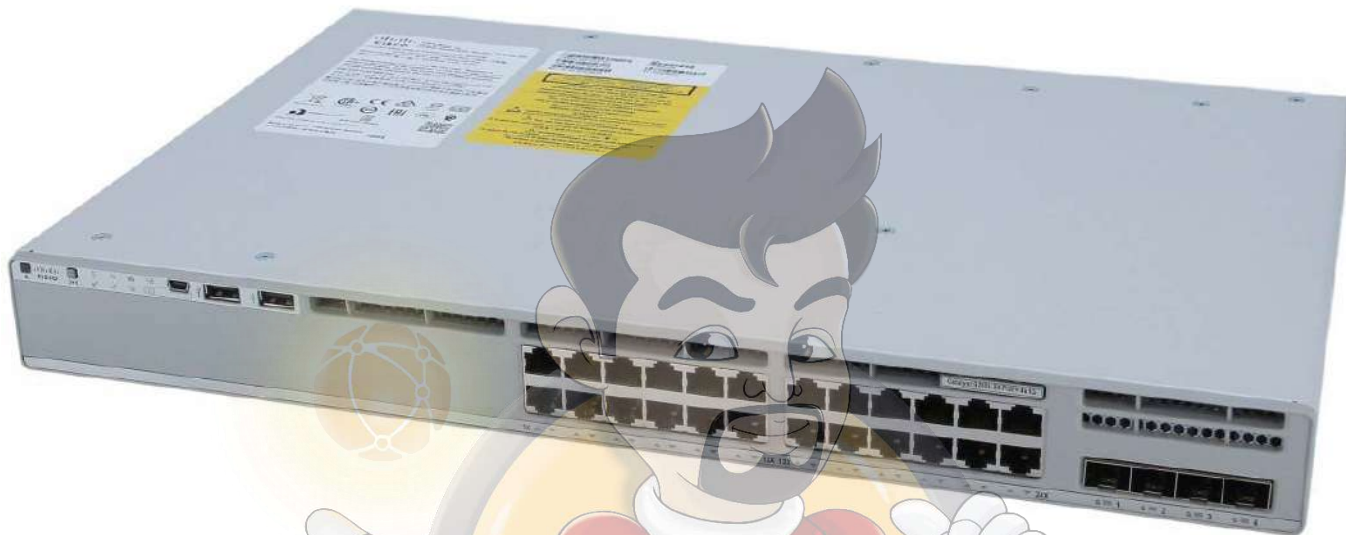


Table 1 shows the Quick Spec of the C9200L-24P-4X-E.

Product Code	C9200L-24P-4X-E
Enclosure Type	Rack-mountable - 1U
Feature Set	Network Essentials
Uplink configuration	4x 10G fixed uplinks
Downlink Ports	24 ports 10/100/1000 full PoE+
Maximum stacking number	8
Stack bandwidth	80 Gbps
Forwarding Performance	95.23 Mpps
Switching Capacity	128 Gbps
DRAM	2 GB
Flash	4 GB
Dimensions	4.4 x 44.5 x 28.8 cm
Fans	Fixed redundant
Default primary AC power supply	PWR-C5-600WAC
Available PoE power with single primary power supply only	370W

Optional secondary power supply	PWR-C5-600WAC
Available PoE power with additional secondary power supply	740W

Product Details



Figure 2 shows the front panel of the Cisco C9200L-24P-4X-E.

(1)	Mode button	(5)	USB Type A storage port
(2)	UID (blue beacon)	(6)	24 ports 10/100/1000 full PoE+
(3)	Status LEDs	(7)	4 x Network SFP uplink module slot
(4)	USB mini-Type B (console) port		

The status LEDs include STAT (status), DUPLX (duplex), SPEED, STACK, SYST (system), ACTV (active) and S-PWR (Stack Power).

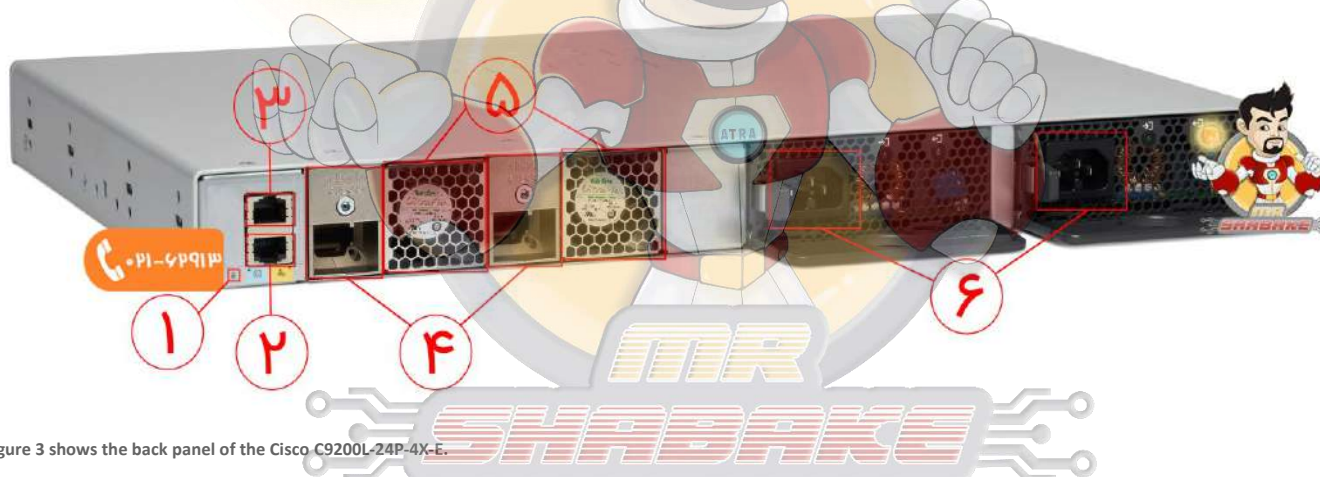


Figure 3 shows the back panel of the Cisco C9200L-24P-4X-E.

(1)	Blue Beacon LED	(4)	StackWise port connector
(2)	CONSOLE (RJ-45 console port)	(5)	Fan module
(3)	MGMT port	(6)	Power supply modules

With full PoE+ capability, power and fan redundancy, stacking bandwidth up to 160 Gbps, modular uplinks, Layer 3 feature support, and cold patching, Catalyst 9200 Series switches are the industry's unparalleled solution with differentiated resiliency and progressive architecture for cost-effective branch-office access. Catalyst 9200 Series switches also provide operational choice of CLI, Cisco Catalyst Center (formerly Cisco DNA Center) on-premises management, or cloud monitoring for Catalyst on Meraki dashboard.

- Flexible downlink options with data, PoE+, UPOE, UPOE with mGig for Wi-Fi 6/6E.
- UADP 2.0 Mini with integrated CPU offers customers optimized scale with better cost structure
- Enhanced security with AES-128 MACsec encryption, policy-based segmentation, and trustworthy systems

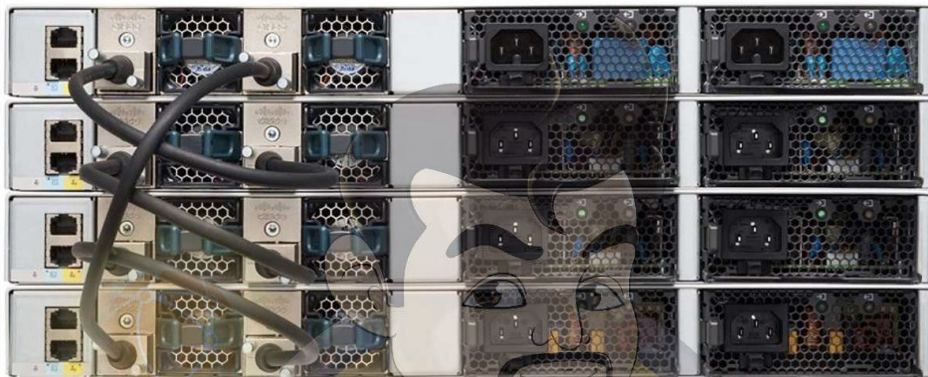
- Layer 3 capabilities, including OSPF, EIGRP, ISIS, RIP, and routed access
- Advanced network monitoring using Full Flexible NetFlow
- Cisco Software-Defined Access (SD-Access):
 - Simplified operations and deployment with policy-based automation from edge to cloud managed with Cisco Identity Services Engine (ISE)
 - Network assurance and improved resolution time through Cisco DNA Center™
- Plug and Play (PnP) enabled: A simple, secure, unified, and integrated offering to ease new branch or campus device rollouts or updates to an existing network
- Cisco IOS XE: A Common Licensing based operating system for the enterprise Cisco Catalyst 9000 product family with support for model-driven programmability and streaming telemetry
- ASIC with programmable pipeline and micro-engine capabilities, along with template-based, configurable allocation of Layer 2 and Layer 3 forwarding, Access Control Lists (ACLs), and Quality of Service (QoS) entries
- Catalyst 9200L and 9200CX are not supported as Fabric Edge for SD-Access Wireless.
- Catalyst 9200, 9200L and 9200CX do not support SD-Access Embedded Wireless Controller.
- Cisco Catalyst 9200 Series switch models are designed for stacking switches as a single virtual switch, enabling customers to have a single management plane and control plane for up to 384 access ports.
- Mixed stacking is not supported. You cannot stack fixed (C9200L SKUs) with modular (C9200 SKUs) models, or other Catalyst switches, e.g. Cisco Catalyst 2960-X and 2960-XR Series. Stacking not available on C9200CX switches.
- The optional StackWise-160 and StackWise-80 kits consist of two adapters and a stacking cable. The default stacking cable is 0.5 m, but options of 1 m and 3 m are also available.

Intelligent PoE+

- IEEE 802.3at PoE+ (up to 30W per port) is supported on Cisco Catalyst 9200 Series switches to lower the total cost of ownership for deployments that incorporate Cisco IP phones, Cisco Aironet wireless access points, or other standards-compliant PoE+ end devices. PoE+ removes the need to supply wall power to PoE-enabled devices and eliminates the cost of adding electrical cabling and circuits that would otherwise be necessary in IP phone and WLAN deployments. With Cisco Catalyst 9200 Series switches, PoE+ power allocation is dynamic, and power mapping scales up to a maximum of 1440W of PoE+ power.
- IEEE 802.3bt Class 6 and Cisco UPOE (up to 60W per port) is supported on Catalyst 9200CX Series mGig model. This facilitates delivery of network power to devices requiring higher power.
- PoE Powered Device (PD) - Catalyst 9200CX-12T-2X2G can be powered through the uplink with IEEE 802.3bt class 6 or UPOE+ power from upstream switch.
- Perpetual PoE is supported on Cisco Catalyst 9200 Series switches, and maintains the PoE+ power during a switch reload. This is important for critical endpoints such as medical devices and for Internet of Things (IoT) endpoints such as PoE-powered lights, so that there is no disruption during a switch reboot.
- Fast PoE: When power is restored to a switch, Fast PoE starts delivering power to endpoints without waiting for the operating system to fully load, thereby speeding up the time for the endpoint to start up.

Stacking accessories

Models	Description
C9200-STACK-KIT	Stack kit for C9200 SKUs only: Two data stack adapters and one data stack cable
C9200L-STACK-KIT	Stack kit for C9200L SKUs only: Two data stack adapters and one data stack cable
STACK-T4-50CM	Data stack 50 cm cable (default cable with Stack Kit)
STACK-T4-1M	Data stack 1 m cable
STACK T4-3M	Data stack 3 m cable



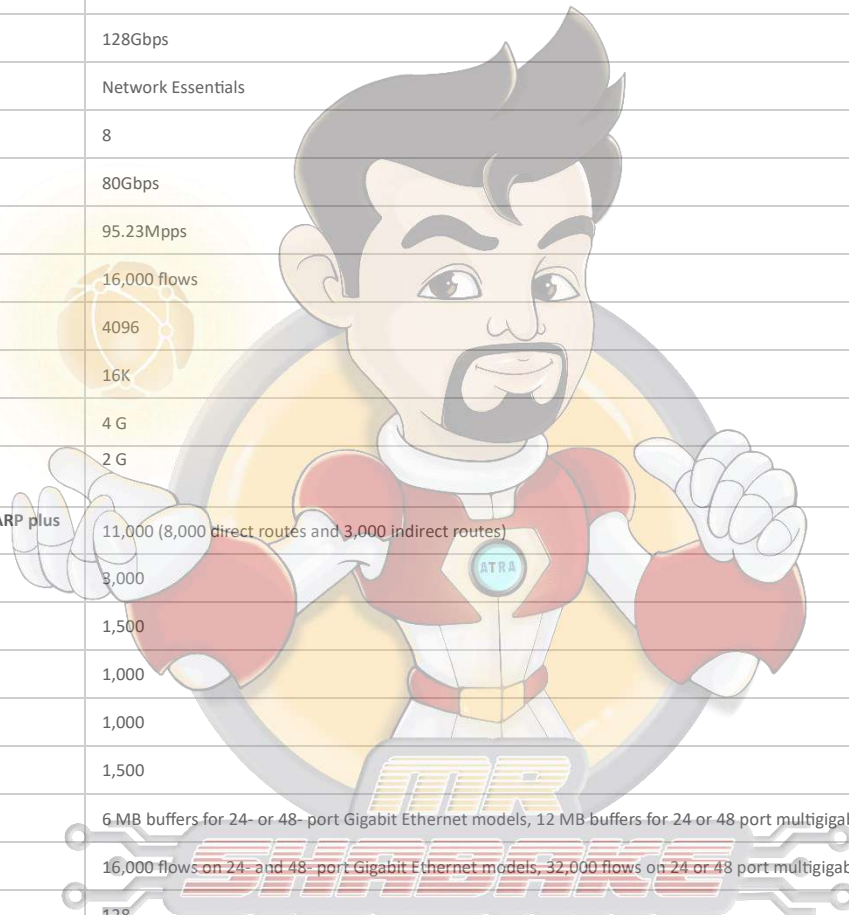
Compare to Similar Items

Table 3 shows the comparison of similar items.

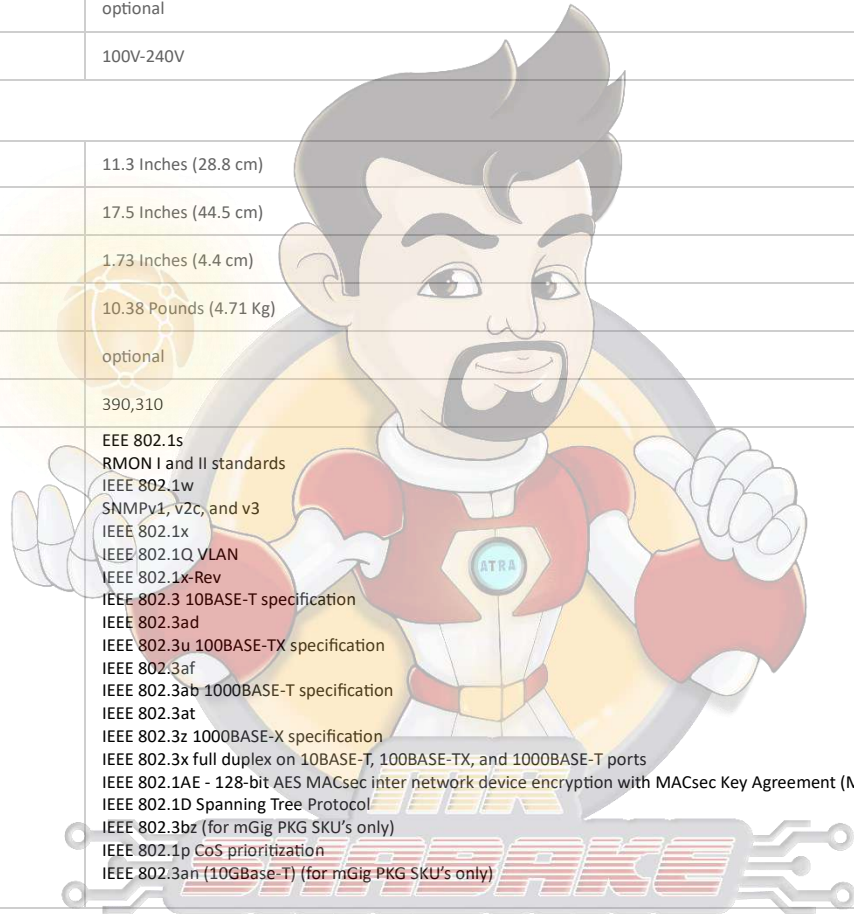
Models	C9200L-24P-4X-E	C9200L-48P-4X-E
Feature Set	Network Essentials	Network Essentials
Ports	24 x port 10/100/1000 PoE+	48 x port 10/100/1000 PoE+
Network SFP uplink module selection	4x 1/10G fixed uplinks	4x 1/10G fixed uplinks
Default primary power supply	PWR-C5-600WAC	PWR-C5-1KWAC
Fans	Fixed redundant	Fixed redundant
Available PoE power with single primary power supply only	370W	740W
Available PoE power with additional secondary power supply ¹	740W	1440W
Switching capacity	128 Gbps	176 Gbps
Weight	4.71 kg	4.80 kg

C9200L-24P-4X-E Specification

enclosure type	Rack-mountable - 1U
Ports	24 x 10/100/1000 ports Full PoE+
Network management Interface	<ul style="list-style-type: none"> Ethernet management port: RJ-45 connectors Management console port: RJ-45 connections
Fans	Fixed redundant
Switching Capacity	128Gbps
Software	Network Essentials
Maximum stacking number	8
Stack Bandwidth	80Gbps
Forwarding Performance	95.23Mpps
FNF entries	16,000 flows
Maximum VLANs IDs	4096
MAC Address Table Size	16K
RAM	4 G
Flash Memory	2 G
Total number of IPv4 routes (ARP plus learned routes)	11,000 (8,000 direct routes and 3,000 indirect routes)
IPv4 routing entries	3,000
IPv6 routing entries	1,500
Multicast routing scale	1,000
QoS scale entries	1,000
ACL scale entries	1,500
Packet buffer per SKU	6 MB buffers for 24- or 48- port Gigabit Ethernet models, 12 MB buffers for 24 or 48 port multigigabit models
Flexible NetFlow (FNF) entries	16,000 flows on 24- and 48- port Gigabit Ethernet models, 32,000 flows on 24 or 48 port multigigabit models
PVST Instances	128
STP Virtual Ports (Port *VLANs) for PVST	13,000
STP Virtual Ports (Port *VLANs) for MST	13,000
Total Switched Virtual Interfaces (SVIs)	512
Jumbo frames	9198 bytes
Wireless bandwidth per switch	N/A
IP SGT binding scale	10K
Number of IPv4 bindings	10K
Number of SGT/DGT policies	2K



Number of SXP Sessions	200
Expansion / Connectivity	
Console ports	USB (Type-B), Ethernet (RJ-45)
Expansion Slot(s)	1 power redundant slot
Stacking cable	<ul style="list-style-type: none"> ●STACK-T4-50CM ●STACK-T4-1M ●STACK T4-3M
Power supply	PWR-C5-600WAC
Power Redundancy	optional
Voltage range (Auto)	100V-240V
Miscellaneous	
Width	11.3 Inches (28.8 cm)
Depth	17.5 Inches (44.5 cm)
Height	1.73 Inches (4.4 cm)
Weight	10.38 Pounds (4.71 Kg)
Rack Mounting Kit	optional
MTBF in hours	390,310
Compliant Standards	<p> IEEE 802.1s RMON I and II standards IEEE 802.1w SNMPv1, v2c, and v3 IEEE 802.1x IEEE 802.1Q VLAN IEEE 802.1x-Rev IEEE 802.3 10BASE-T specification IEEE 802.3ad IEEE 802.3u 100BASE-TX specification IEEE 802.3af IEEE 802.3ab 1000BASE-T specification IEEE 802.3at IEEE 802.3z 1000BASE-X specification IEEE 802.3x full duplex on 10BASE-T, 100BASE-TX, and 1000BASE-T ports IEEE 802.1AE - 128-bit AES MACsec inter network device encryption with MACsec Key Agreement (MKA) IEEE 802.1D Spanning Tree Protocol IEEE 802.3bz (for mGig PKG SKU's only) IEEE 802.1p CoS prioritization IEEE 802.3an (10GBase-T) (for mGig PKG SKU's only) </p>



Management	<p>BRIDGE-MIB●CISCO-NHRP-EXT-MIB CISCO-BRIDGE-EXT-MIB●CISCO-NTP-MIB CISCO-BULK-FILE-MIB●CISCO-PAGP-MIB CISCO-CABLE-DIAG-MIB●CISCO-PORT-SECURITY-MIB CISCO-CALLHOME-MIB●CISCO-PORT-STORM-CONTROL-MIB CISCO-CEF-MIB●CISCO-POWER-ETHERNET-EXT-MIB CISCO-CIRCUIT-INTERFACE-MIB●CISCO-PRIVATE-VLAN-MIB CISCO-CONFIG-COPY-MIB●CISCO-PROCESS-MIB CISCO-CONFIG-MAN-MIB●CISCO-PRODUCTS-MIB CISCO-DEVICE-LOCATION-MIB●CISCO-RF-MIB CISCO-DHCP-SNOOPING-MIB●CISCO-RTP-METRICS-MIB CISCO-EIGRP-MIB●CISCO-RTTMON-ICMP-MIB CISCO-EMBEDDED-EVENT-MGR-MIB●CISCO-STACKWISE-MIB CISCO-ENTITY-FRU-CONTROL-MIB●CISCO-STP-EXTENSIONS-MIB CISCO-ENTITY-SENSOR-MIB●CISCO-SYSLOG-MIB CISCO-ENTITY-VENDORTYPE-OID-MIB●CISCO-TCP-MIB CISCO-ERR-DISABLE-MIB●CISCO-UDLD-MIB CISCO-FLASH-MIB●CISCO-VLAN-IFTABLE-RELATIONSHIP-MIB CISCO-FLOW-MONITOR-MIB●ENTITY-MIB CISCO-FTP-CLIENT-MIB●HC-ALARM-MIB CISCO-HSRP-EXT-MIB●HC-RMON-MIB CISCO-HSRP-MIB●IEEE8023-LAG-MIB CISCO-IETF-BFD-MIB●IF-MIB CISCO-IETF-PPVPN-MPLS-VPN-MIB●IP-FORWARD-MIB CISCO-IETF-PW-MPLS-MIB●IP-MIB CISCO-IF-EXTENSION-MIB●LLDP-EXT-MED-MIB CISCO-IGMP-FILTER-MIB●LLDP-MIB CISCO-IMAGE-LICENSE-MGMT-MIB●MAU-MIB CISCO-IMAGE-MIB●MPLS-L3VPN-STD-MIB CISCO-IP-CBR-METRICS-MIB●MPLS-LSR-STD-MIB CISCO-IP-STAT-MIB●MPLS-VPN-MIB CISCO-IP-TAP-MIB●OLD-CISCO-CHASSIS-MIB CISCO-IP-URPF-MIB●OLD-CISCO-CPU-MIB CISCO-IPSEC-FLOW-MONITOR-MIB●OLD-CISCO-INTERFACES-MIB CISCO-IPSEC-MIB●OLD-CISCO-IP-MIB CISCO-IPSEC-PROVISIONING-MIB●OLD-CISCO-MEMORY-MIB CISCO-IPSLA-AUTOMEASURE-MIB●OLD-CISCO-SYS-MIB CISCO-IPSLA-ECHO-MIB●OLD-CISCO-TCP-MIB CISCO-IPSLA-JITTER-MIB●OLD-CISCO-TS-MIB CISCO-L2-CONTROL-MIB●POWER-ETHERNET-MIB CISCO-L2L3-INTERFACE-CONFIG-MIB●RFC1213-MIB CISCO-LAG-MIB●RMON-MIB CISCO-LICENSE-MGMT-MIB●RMON2-MIB CISCO-LOCAL-AUTH-USER-MIB●SMON-MIB CISCO-MAC-NOTIFICATION-MIB●SNMPv2-MIB CISCO-MDI-METRICS-MIB●SONET-MIB CISCO-MEDIA-METRICS-MIB●TCP-MIB CISCO-MEMORY-POOL-MIB●UDP-MIB CISCO-MPLS-LSR-EXT-STD-MIB●CISCO-NBAR-PROTOCOL-DISCOVERY-MIB</p>
Environmental Ranges	
Acoustic noise	<p>Measured per ISO 7779 and declared per ISO 9296 Bystander positions operating to an ambient temperature of 25°C</p>
Connectors and cabling	<ul style="list-style-type: none"> ● 1000BASE-T ports: RJ-45 connectors, 4-pair Cat 5E UTP cabling ● 1000BASE-T SFP-based ports: RJ-45 connectors, 4-pair Cat 5E UTP cabling ● 100BASE-FX, 1000BASE-SX, -LX/LH, -ZX, -BX10, Dense Wavelength-Division Multiplexing (DWDM) and Coarse Wavelength-Division Multiplexing (CWDM) SFP transceivers: LC fiber connectors (single- mode or multimode fiber) ● 10GBASE-SR, LR, LRM (only C9200), ER, ZR, DWDM SFP+ transceivers: LC fiber connectors (single- mode or multimode fiber) ● SFP+ connector ● Cisco StackWise-160/80 stacking ports: copper-based Cisco StackWise cabling ● Ethernet management port: RJ-45 connectors, 4-pair Cat 5 UTP cabling ● Management console port: 9200/9200L – RJ45 or mini USB connectors.-RJ-45-to-DB9 cable for PC connections, USB-C adaptor, USB adaptor; 9200CX - Micro USB connector, with option to convert to RJ45 with CAB-CON-USBRJ45

شما میتوانید کلیه تجهیزات شبکه را با گارانتی و ضمانت اصالت کالا از [فروشگاه اینترنتی مستر شبکه](#) تهیه کنید.

مقالات مرتبط :

- [کانفیگ سوئیچ سیسکو](#)
- [راهنمای خرید سوئیچ های POE](#)
- [بررسی سوئیچ های سیسکو سری 9000](#)
- [سوئیچ سیسکو در دیتاستر](#)
- [انواع سیستم عامل سوئیچ سیسکو](#)
- [انواع سوئیچ شبکه و کاربردهای آن](#)
- [معرفی پورت SFP و کاربرد آن](#)
- [قابلیت POE و کاربرد آن](#)

